

1 | LEVEL 7 (8TH FLOOR)
1:75

The location and type of any fire safety and any other safety equipment is shown as at present. This may be varied from time to time with the agreement of the Fire Officer or after a fire risk assessment.

Anything shown on this plan which is not required by the Plan Regulations is for illustrative purposes only, and does not form part of the Premises Licence

KEY	
180mm x 60mm fire compartment door - integrity and stability. 2 doors, shown etc with the fire compartment construction.	Fire Emergency Exit
180mm x 60mm fire compartment door - integrity and stability. 2 doors, shown etc with the fire compartment construction.	Wheelchair Refuge
180mm x 60mm fire compartment door - integrity and stability. 2 doors, shown etc with the fire compartment construction.	LED Emergency Exit Sign
180mm x 60mm fire compartment door - integrity and stability. 2 doors, shown etc with the fire compartment construction.	Smoke Detector
180mm x 60mm fire compartment door - integrity and stability. 2 doors, shown etc with the fire compartment construction.	Classified Smoke-Motion Detector
180mm x 60mm fire compartment door - integrity and stability. 2 doors, shown etc with the fire compartment construction.	Fire Alarm Repeater
180mm x 60mm fire compartment door - integrity and stability. 2 doors, shown etc with the fire compartment construction.	Walk Way Obstacle Free
180mm x 60mm fire compartment door - integrity and stability. 2 doors, shown etc with the fire compartment construction.	Road Obstacle when emergency vehicle
180mm x 60mm fire compartment door - integrity and stability. 2 doors, shown etc with the fire compartment construction.	Fire Station
180mm x 60mm fire compartment door - integrity and stability. 2 doors, shown etc with the fire compartment construction.	Fire Detector (Heat)
180mm x 60mm fire compartment door - integrity and stability. 2 doors, shown etc with the fire compartment construction.	Fire Detector (Flame)
180mm x 60mm fire compartment door - integrity and stability. 2 doors, shown etc with the fire compartment construction.	Fire Detector (Carbon Dioxide)
180mm x 60mm fire compartment door - integrity and stability. 2 doors, shown etc with the fire compartment construction.	Emergency Light Fitting
180mm x 60mm fire compartment door - integrity and stability. 2 doors, shown etc with the fire compartment construction.	Curb kerb to vehicle
180mm x 60mm fire compartment door - integrity and stability. 2 doors, shown etc with the fire compartment construction.	Signs for kerbside vehicle emergency call to premises on fire supply authorities
180mm x 60mm fire compartment door - integrity and stability. 2 doors, shown etc with the fire compartment construction.	AREA FOR LICENSING ACTIVITIES

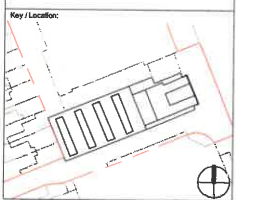
NOTE: THIS DRAWING WAS PRODUCED BY CAD/CAM AND SHOULD BE PRINTED AND COPIED BY LASER

Disclaimer:
Do not scale from this drawing.
Check all dimensions on site before fabrication or setting out. This document is copyright and may not be reproduced without permission of the owner.
Ordnance Survey data contained herein is for use on this project only. Third parties involved in this project relating to reproduction of data for the purposes of this project, may do so on display of the following:
© Crown Copyright. All rights reserved 2010 License No 0100031673
Notes:
Areas have been calculated in accordance with the RICS/EVIA code of Measuring Practice, 6th edition, 2007) using the latest options MA, GA and GEA (ground floor GEA includes external cycle and refuse stores)
Any alterations to be made on the basis of these predictions, whether as to project viability, pre-letting, lease agreements, conveyances and the like, should make due allowance for fluctuations arising from the following: design development, accessible survey, site levels and site dimensions, construction method and building tolerances, Local Authority and Statutory constraints

Information Exchange 1:	Information Exchange 2:
Information Exchange 3:	Information Exchange 4:

Rev:	Notes:	Date:	Drawn:	Issued:
A	INFORMATION	03.02.2022	MP	BT
B	INFORMATION	04.02.2022	MP	BT

Consultants:



FLANAGAN LAWRENCE
64 Perivale Road, London, W7 2ET
T +44 (0) 20 7706 8355 F +44 (0) 20 7717 4200
www.flanaganlawrence.com
E info@flanaganlawrence.com

Client:
Dorsett Hospitality International

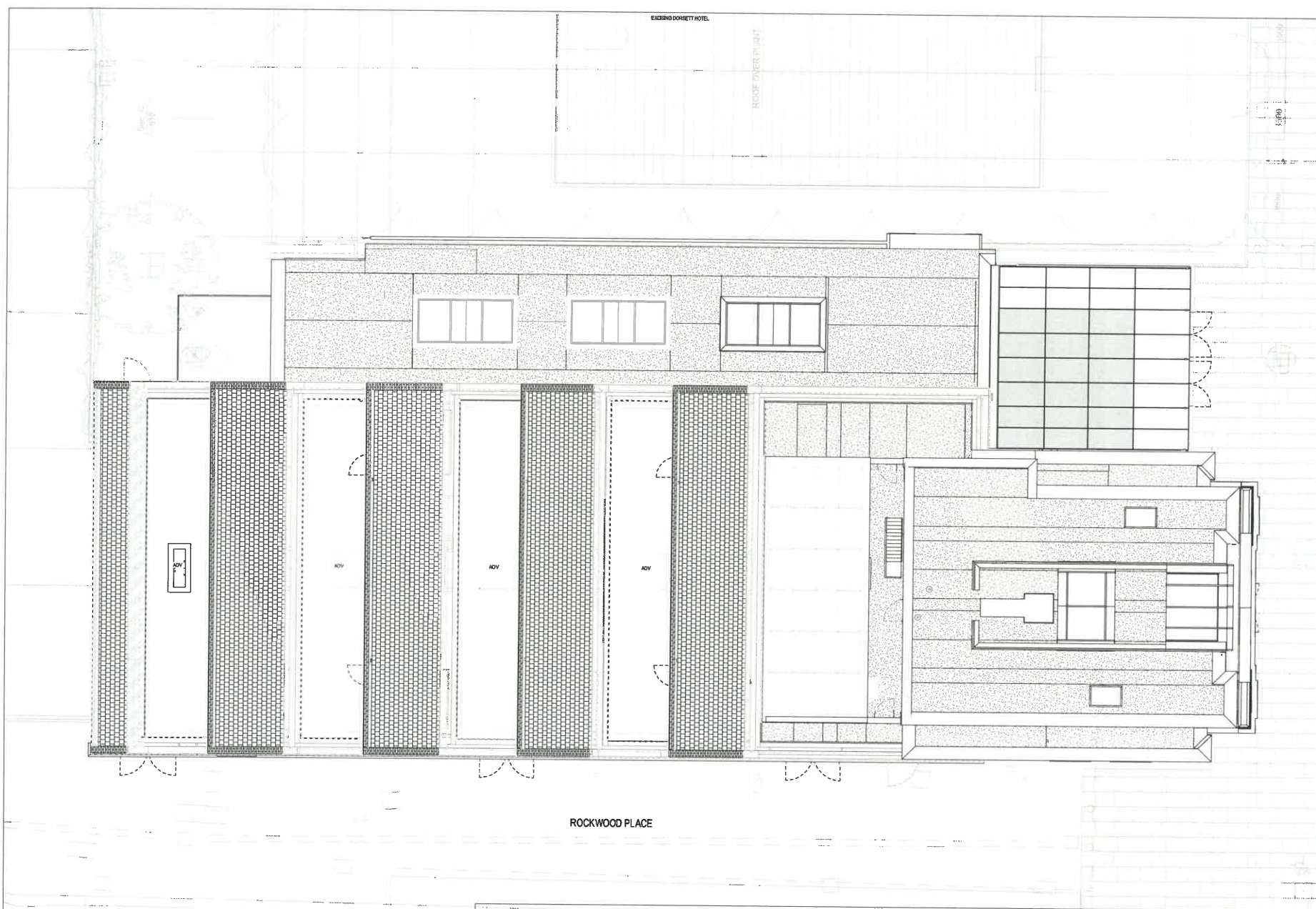
Purpose of Issue:
LICENSING

Project:
56 Shepherds Bush Green

Drawing Title:
LEVEL 7 (8TH FLOOR)
LICENSING

Drawn By: MP Issued By: BT Date of First Issue: 03.02.2022

Project No: 15-040 Scale @: 1:75 As Indicated
Drawing No: 1001-FLA-DRG-01-07-0107 Revision: B

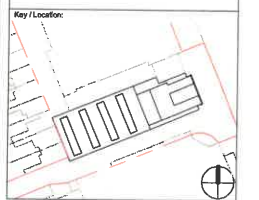


Disclaimer:
 Do not scale from this drawing.
 Check all dimensions on site before fabrication or setting out. This document is copyright and may not be reproduced without permission of the owner.
 Cadmus Survey data (unclassified) is for use on this project only. Third parties involved in this project wishing to reproduce this data for the purposes of said project, may do so on condition of the following:
 © Cadmus Copyright. All rights reserved 2010 License No 010001673
 Notes:
 Areas have been calculated in accordance with the RICS/BVA code of Measuring Practice (8th edition, 2007) using the tiled columns (ICA) and GEA (Ground floor) (GEA includes external yards and refuse stores.
 Any decisions to be made on the basis of these predictions, whether as to project viability, pricing, lease agreements, conversion and the like, should make due allowance for fluctuations arising from the following: design development, accurate site survey, site levels and site circumstances, construction method and building materials, Local Authority and Statutory consents

Information Exchange 1:	Information Exchange 2:
Information Exchange 3:	Information Exchange 4:

Rev:	Notes:	Date:	Dwn:	Iss:
A	INFORMATION	03.02.2022	MP	BT
B	INFORMATION	04.02.2022	MP	BT

Consultants:



FLANAGAN LAWRENCE
 88 Shepherd Bush Green, London, W2 8PT
 T +44 (0) 20 7788 8165 F +44 (0) 20 7107 6255
 www.flanaganlawrence.com
 E info@flanaganlawrence.com

Client:
 Dorset Hospitality International

Purpose of Issue:
LICENCING

Project:
 56 Shepherd Bush Green

Drawing Title:
ROOF LICENCING

Drawn By: MP	Reduced By: BT	Date of First Issue: 03.02.2022
Project No: 15-040	Scale @ A1: As indicated	Revision: B
Drawing No: 1001-AFLA-DRG-01-08-01-08		

The location and type of any fire safety and any other safety equipment is shown as at present. This may be varied from time to time with the agreement of the Fire Officer or after a fire risk assessment.

Anything shown on this plan which is not required by the Plan Regulations is for illustrative purposes only, and does not form part of the Premises Licence

KEY

	Minimum 50 mm for compartmentation - integrity and loadbearing. Minimum allows up to 150 mm for non-compartments		First Aid emergency kit		Wheelchair Access		New fire detection test		Emergency light signs
	Minimum 45 mm for compartmentation - integrity and loadbearing. All doors, windows etc with fire to maintain compartmentation		F2300 fire-rated building door with smoke and sound insulation		WIP (Work in Progress)		Fixed fire alarm		Category 1 lifts
	Minimum 30 mm for compartmentation - integrity and loadbearing. All doors, windows etc with fire to maintain compartmentation		F2300 fire-rated building door with smoke and sound insulation		Evacuee Destinations		Fire Escape Stairs		Category 2 lifts
	Minimum 20 mm with cavity barrier		F2300 fire-rated building door with smoke and sound insulation		Control Points (Smoke Detector)		Fire Escape Stairs		Category 3 lifts
			F2300 fire-rated building door with smoke and sound insulation		Fire Alarm Buzzer		Fire Escape Stairs		Category 4 lifts

NOTE: THIS DRAWING WAS PRODUCE IN COLOUR AND SHOULD BE PRINTED AND COPIED IN COLOUR

SHEPHERD'S BUSH GREEN